



Courtesy LancasterHistory

**Keystone Furniture Company**  
Perpendicular Gothic

**1921**

Architect: C Emlen Urban (1863-1939)

49



Courtesy LancasterHistory

**Fulton National Bank**  
Art Deco

(Photo 1940's)

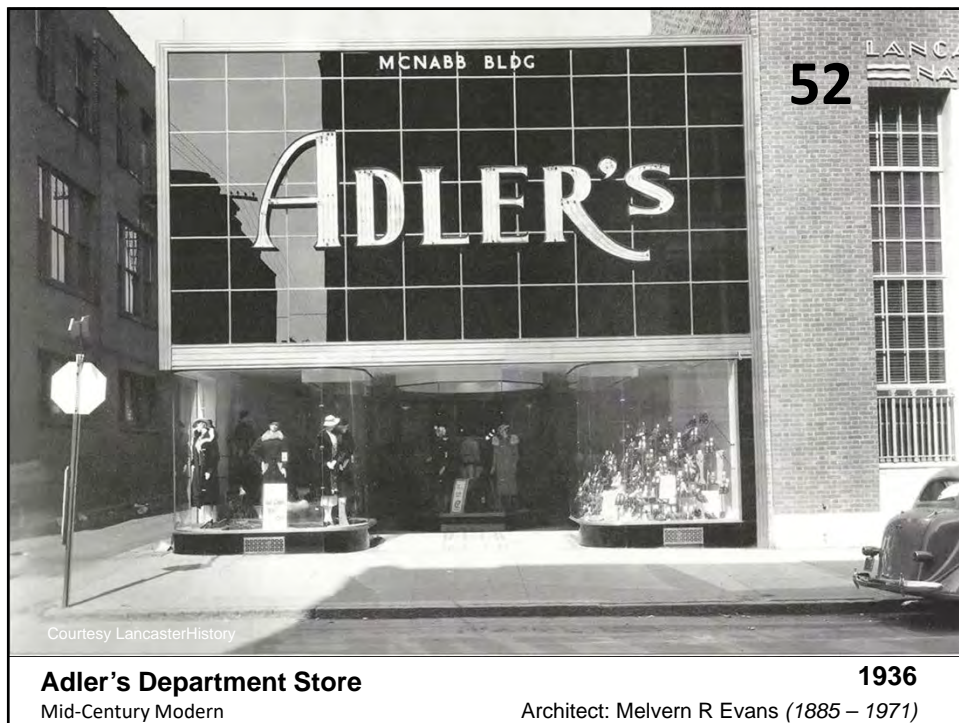
**1928**

Architect: Uffinger Foster & Bookwalter

50



51

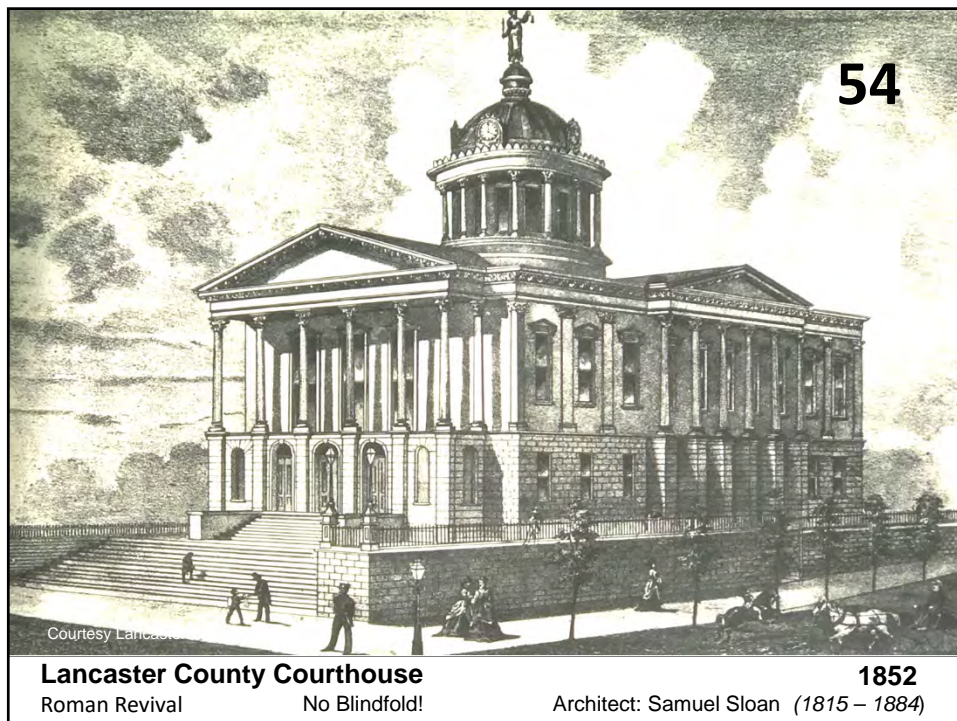


52





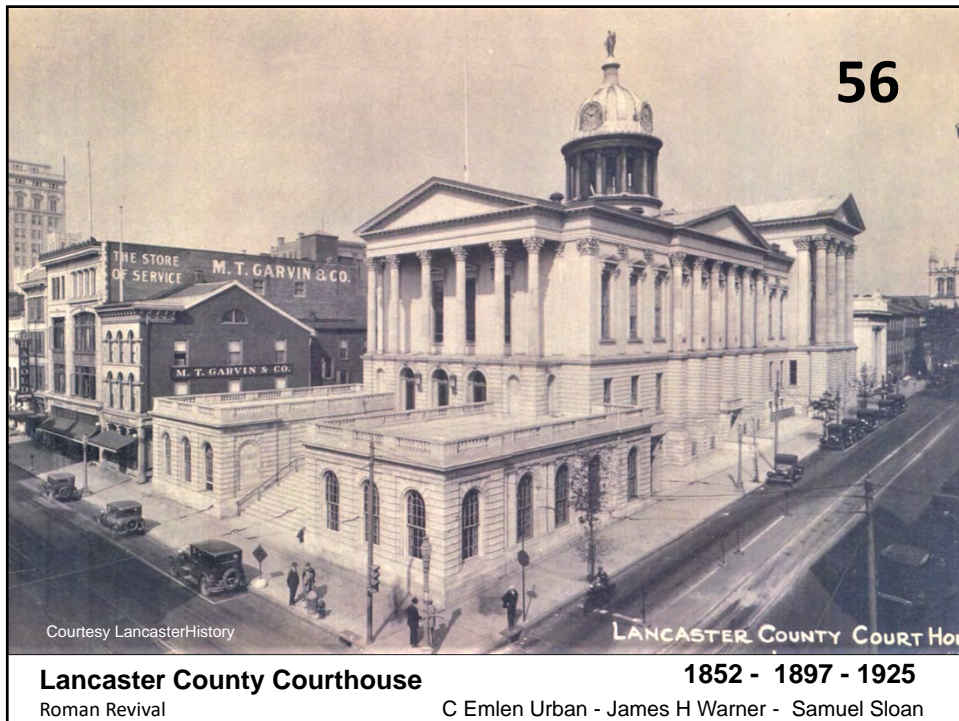
53



54



55

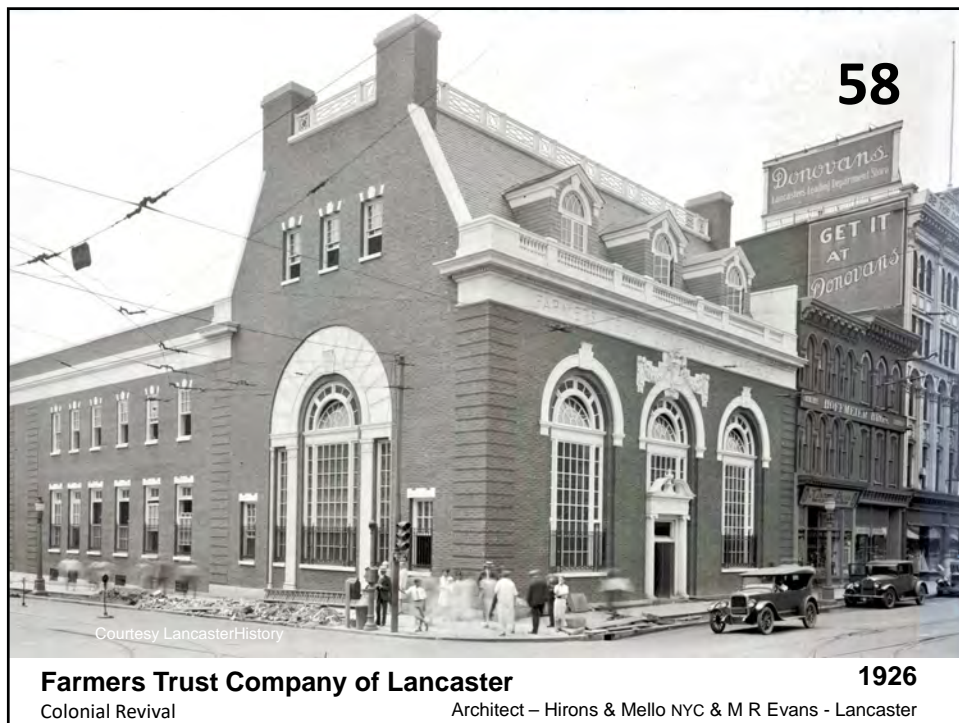


56

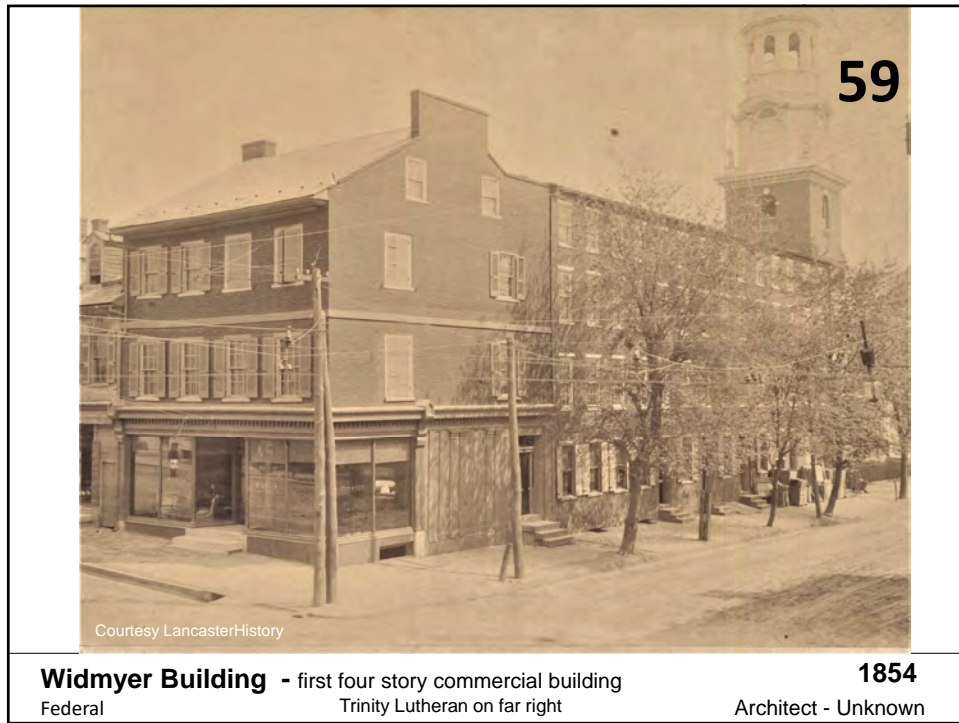




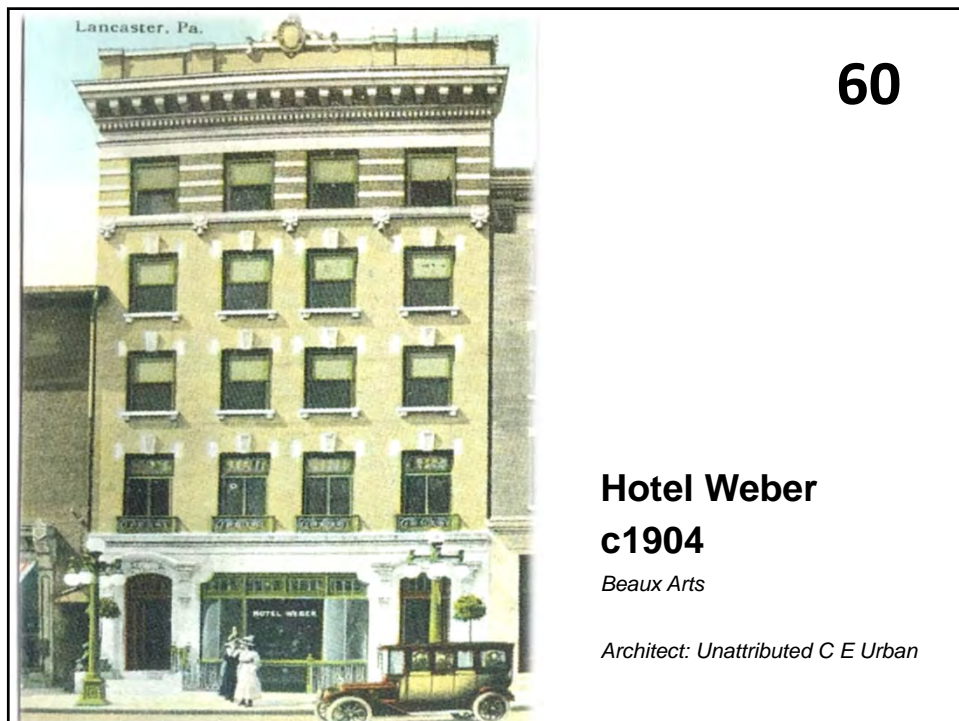
57



58



59

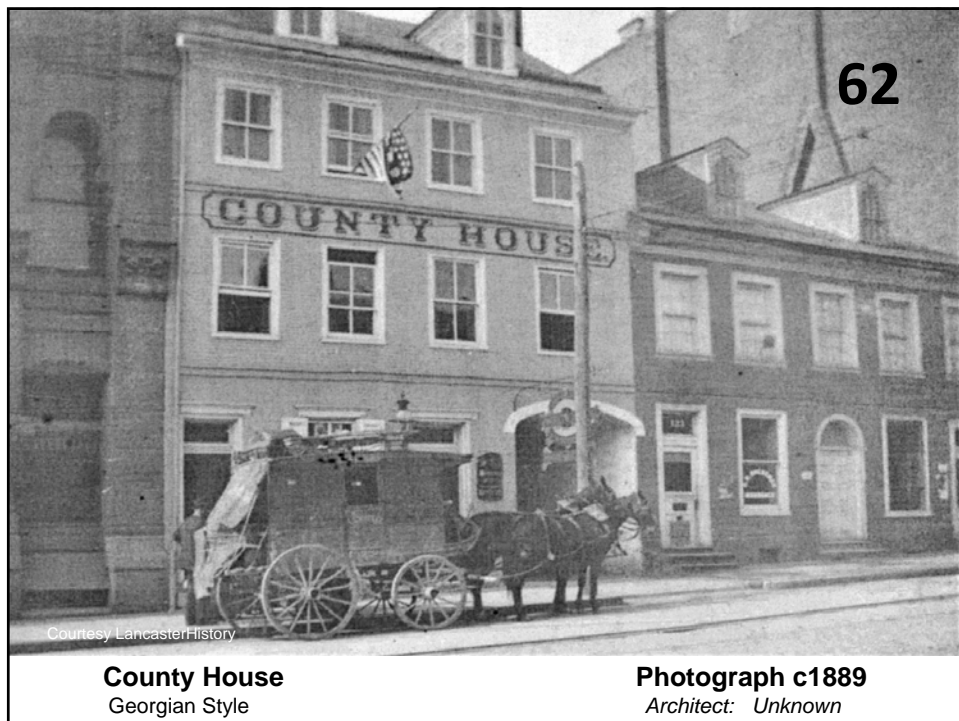


60





61



62



63

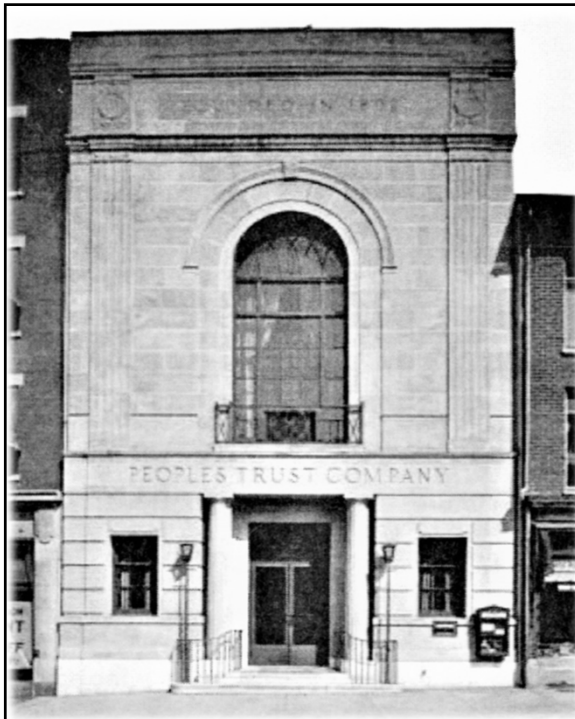
**Peoples National Bank**

Romanesque Revival

**1887**

*Architect: A P Welsh*

63



64

**Peoples Trust Company**

Colonial Revival

**1925**

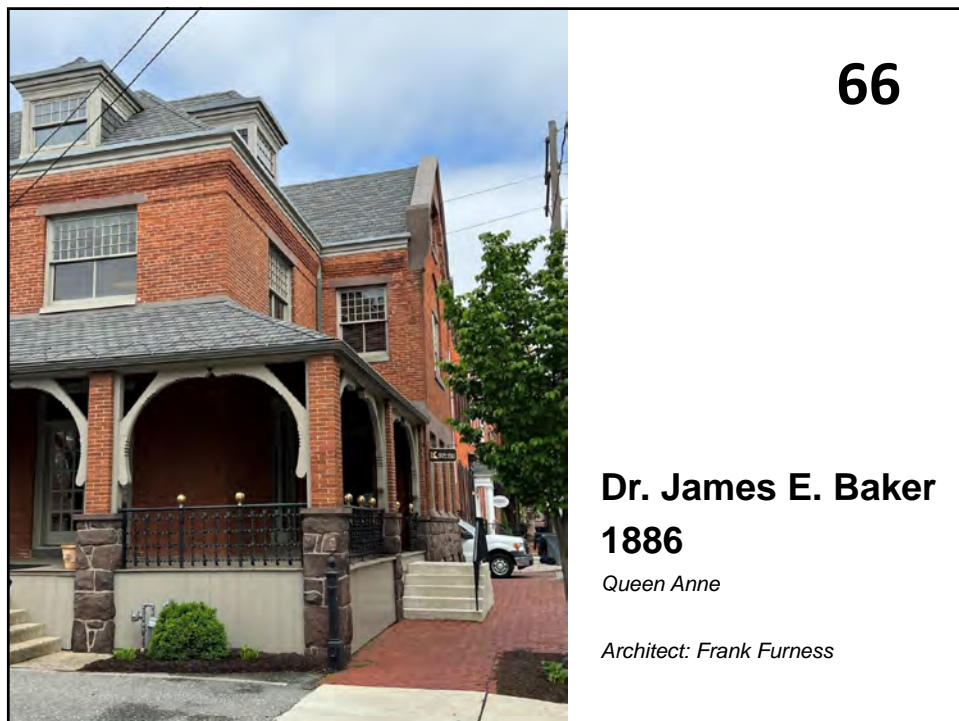
*Architect: Unknown*

64

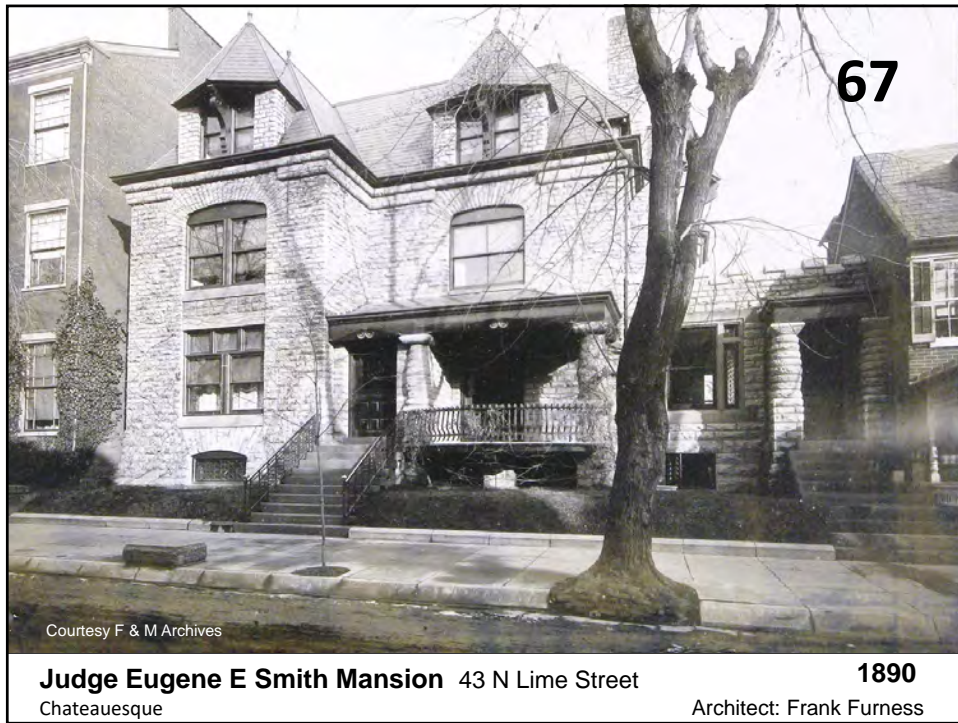




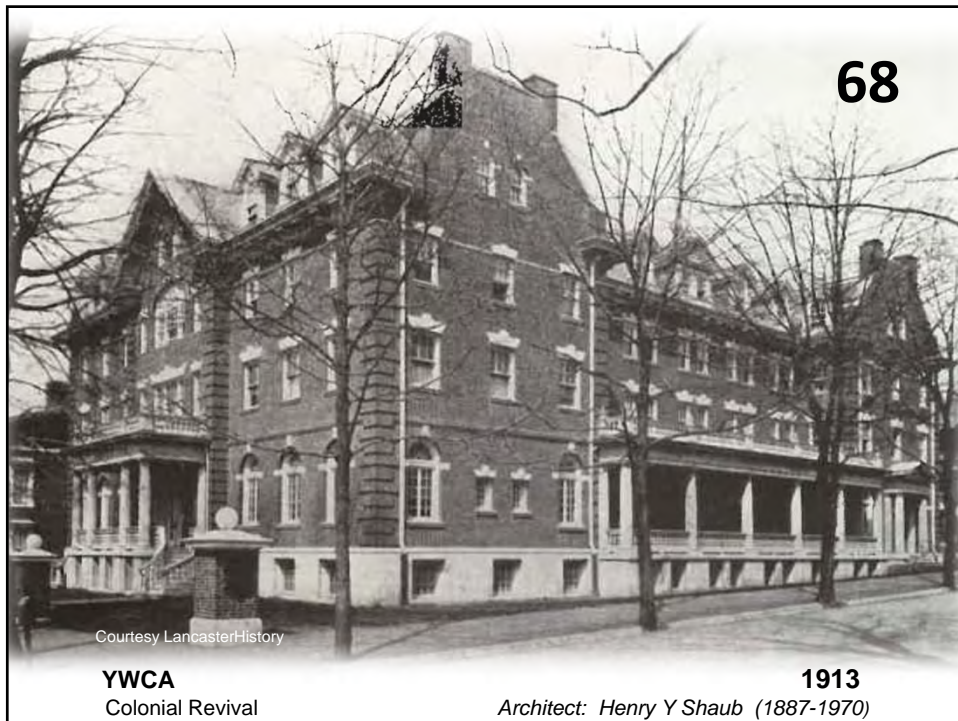
65



66



67

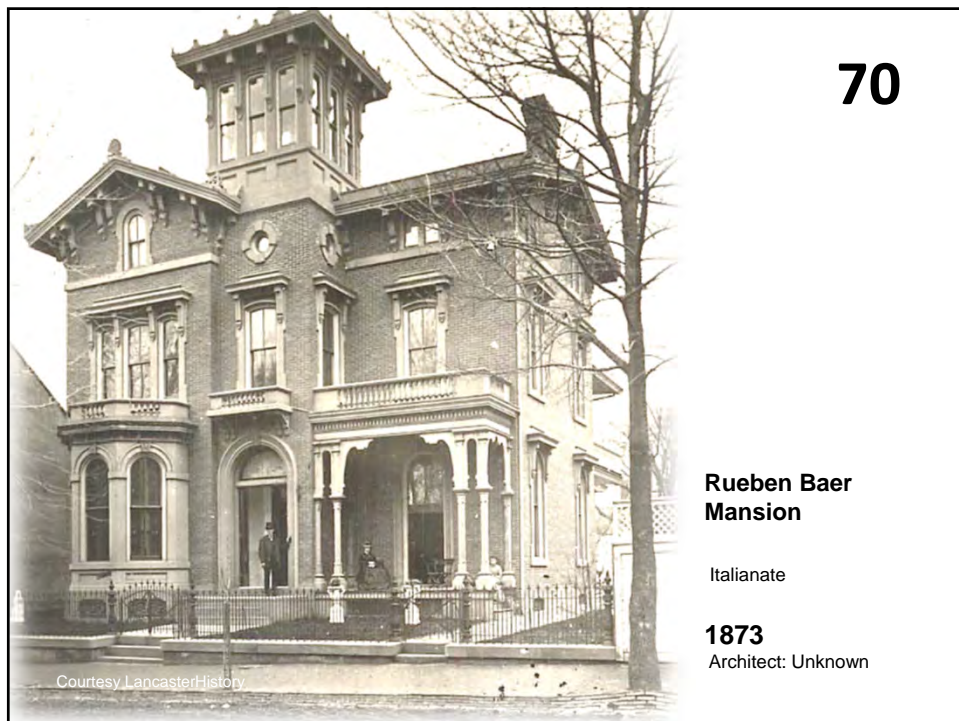


68

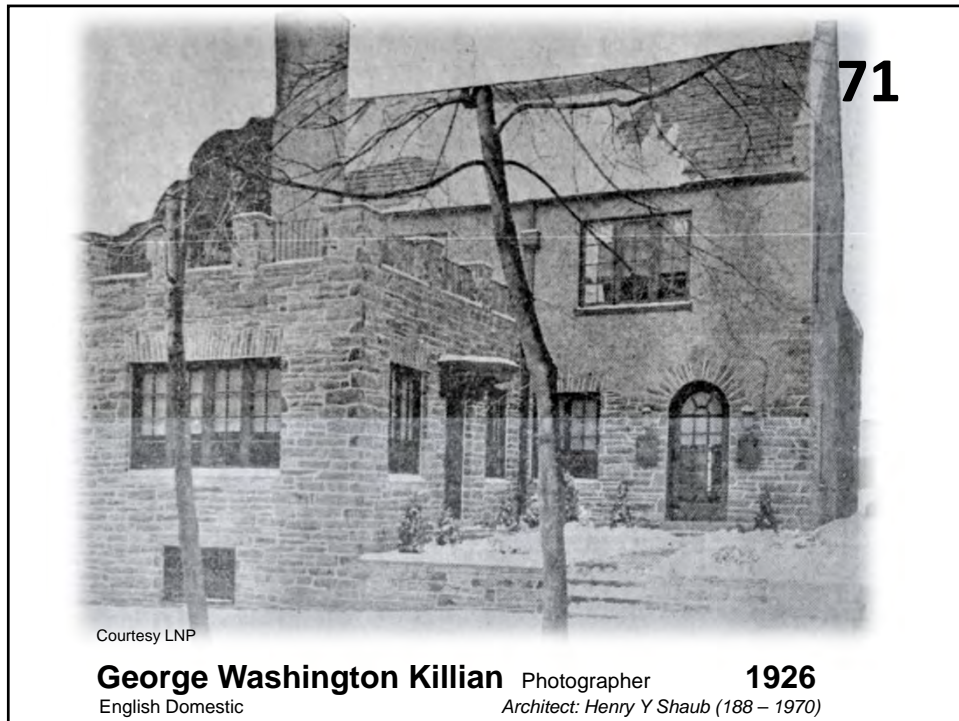




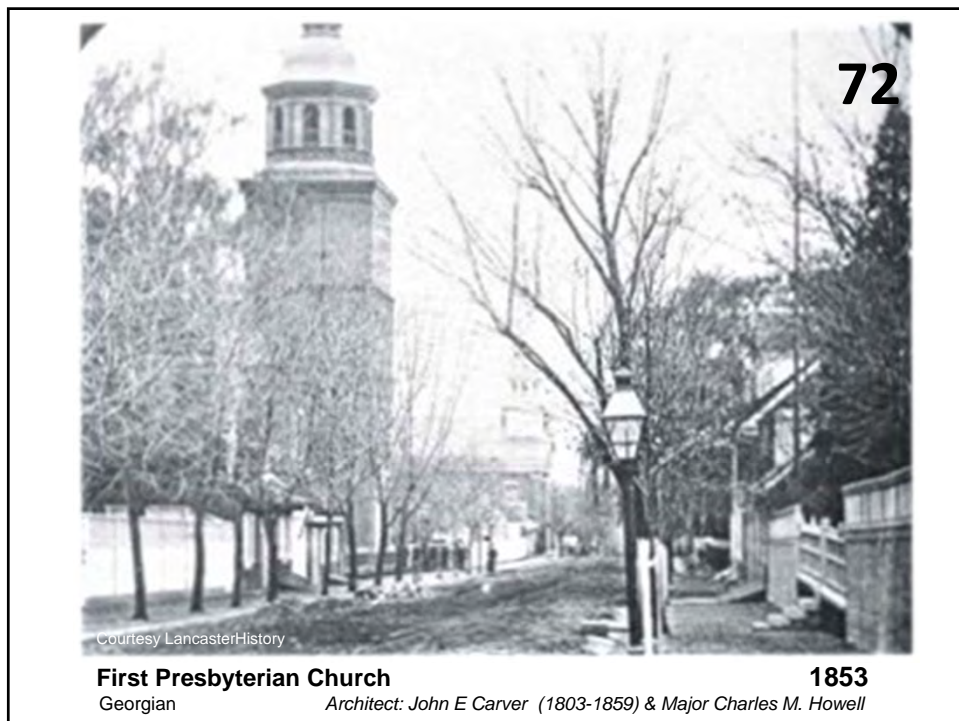
69



70



71



72



**73**

**First Presbyterian Church Steeple**

Georgian Revival

**1877**

Architect: Frederick P Dinkleberg  
(1858 – 1935)

73

**74**

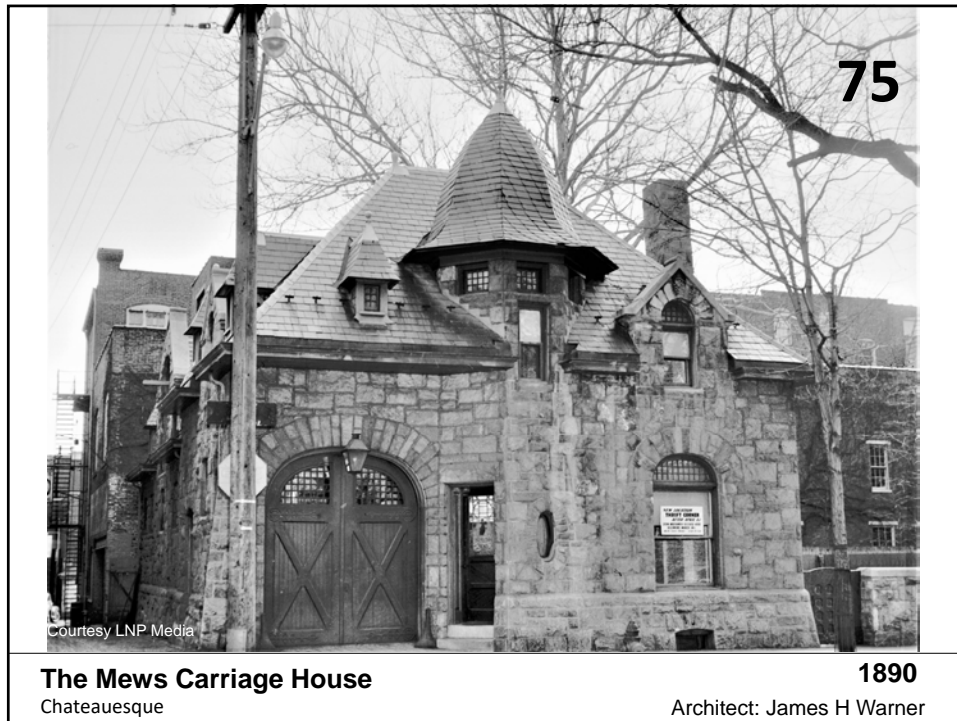
**First Presbyterian Church Evans Chapel**

Romanesque Revival

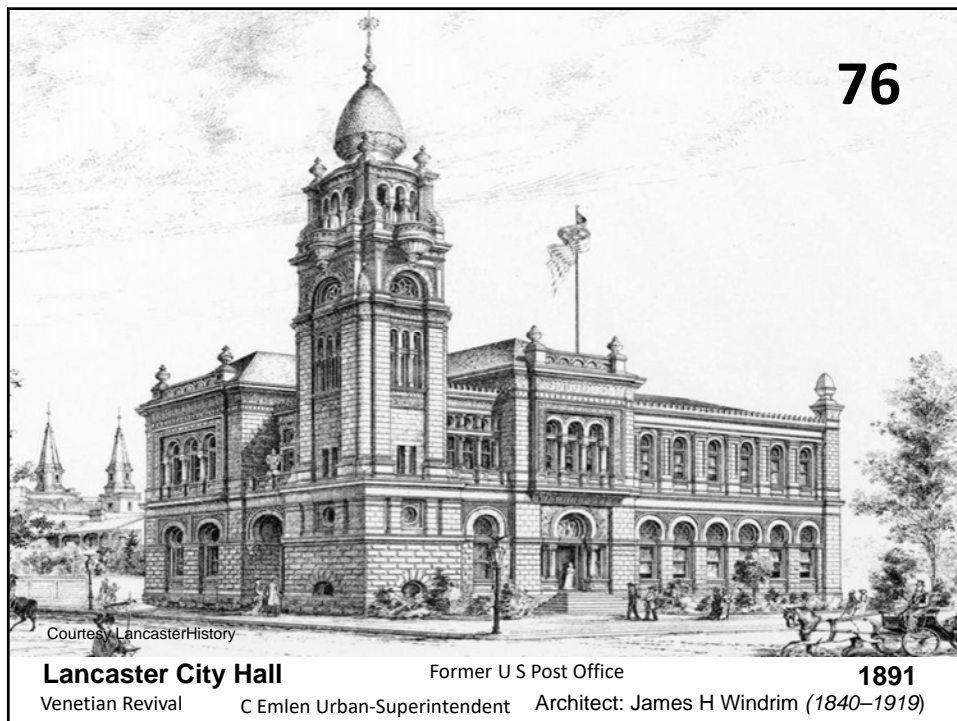
**1913**

Architect: C Emlen Urban (1863-1939)

74

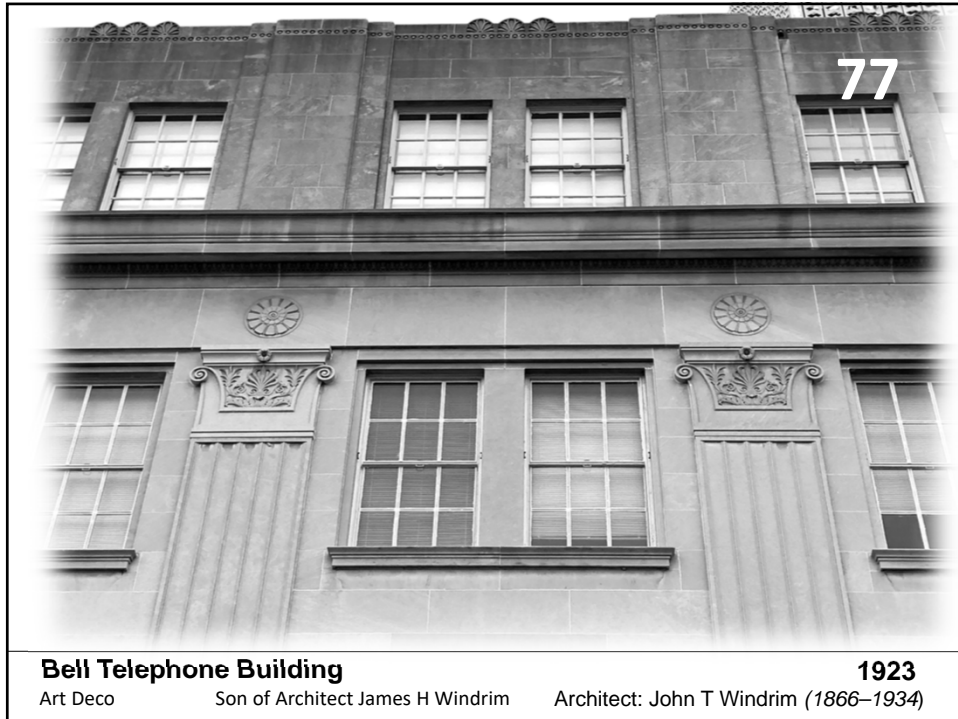


75

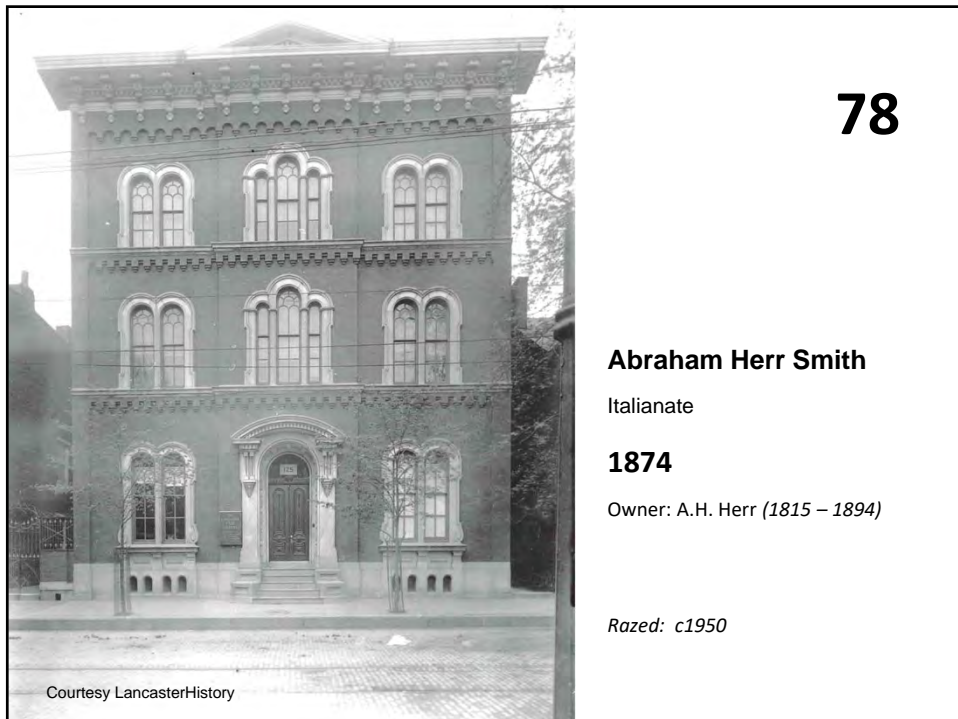


76

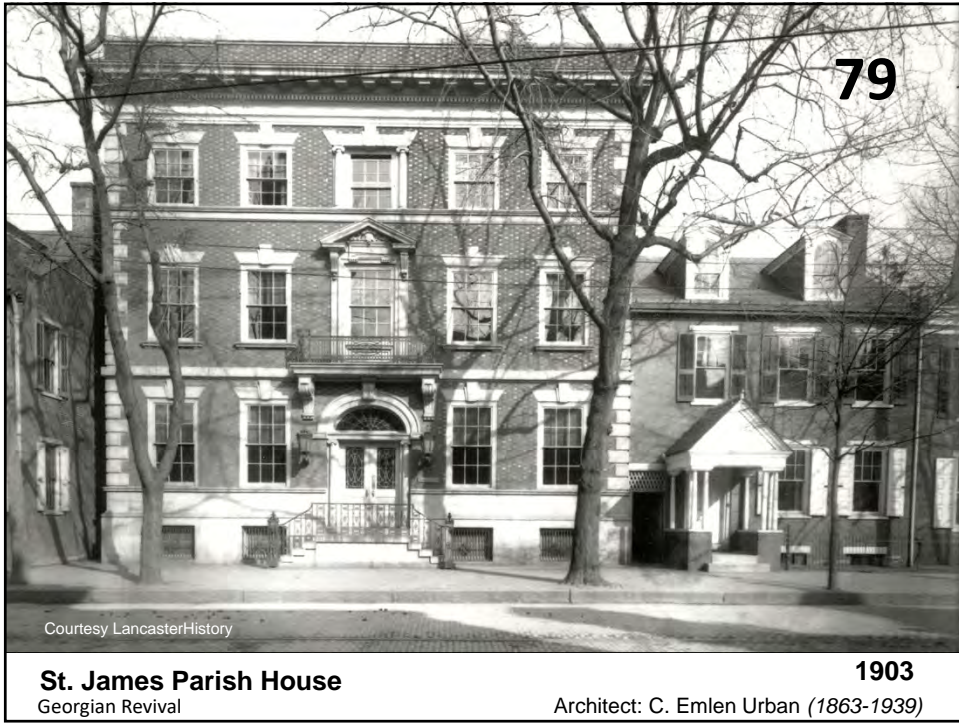




77



78



**St. James Parish House**  
Georgian Revival

**1903**  
Architect: C. Emlen Urban (1863-1939)

79



**Judge Henry G. Long Residence**  
Federal  
Henry Grimly Long (1804-1889)

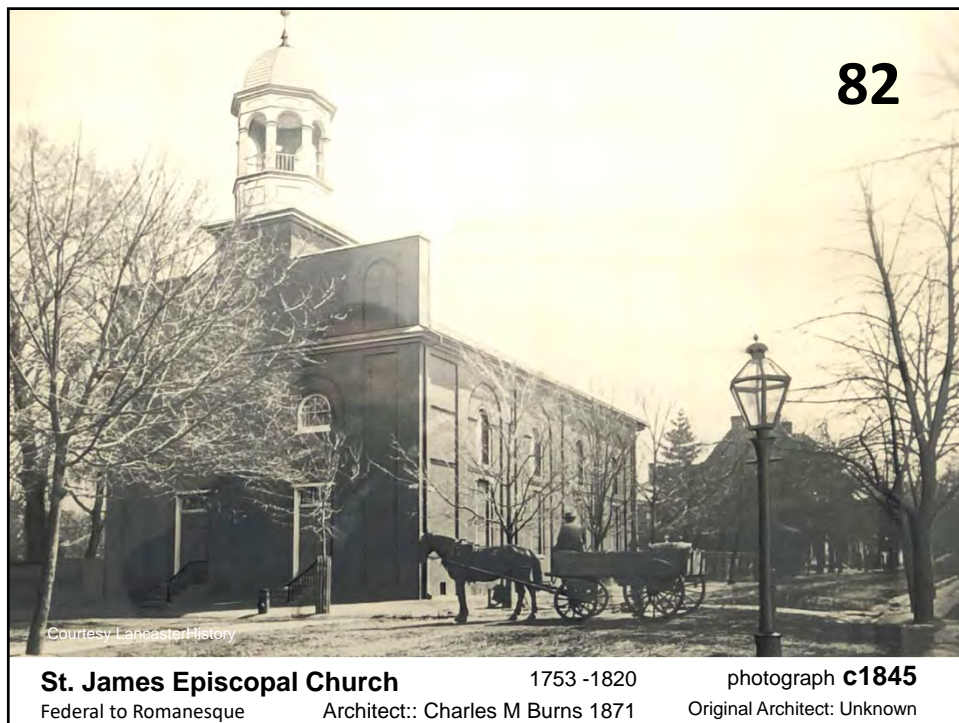
**photograph c1865**  
Architect: Unknown

80

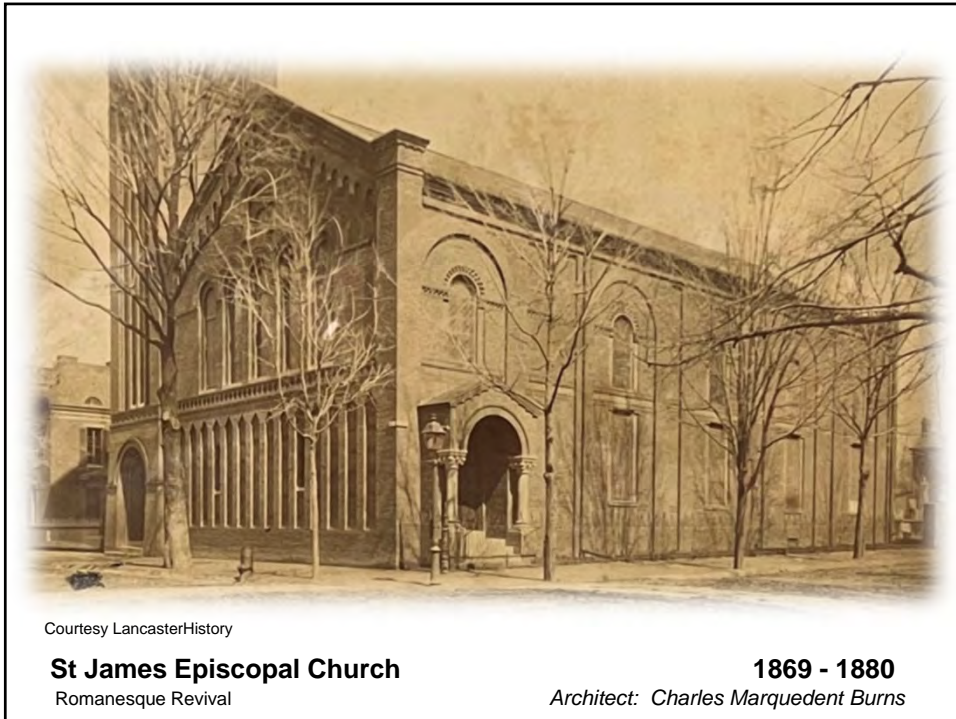




81



82



83



84

**St. Paul's Reformed**

Gothic Revival

**1902**

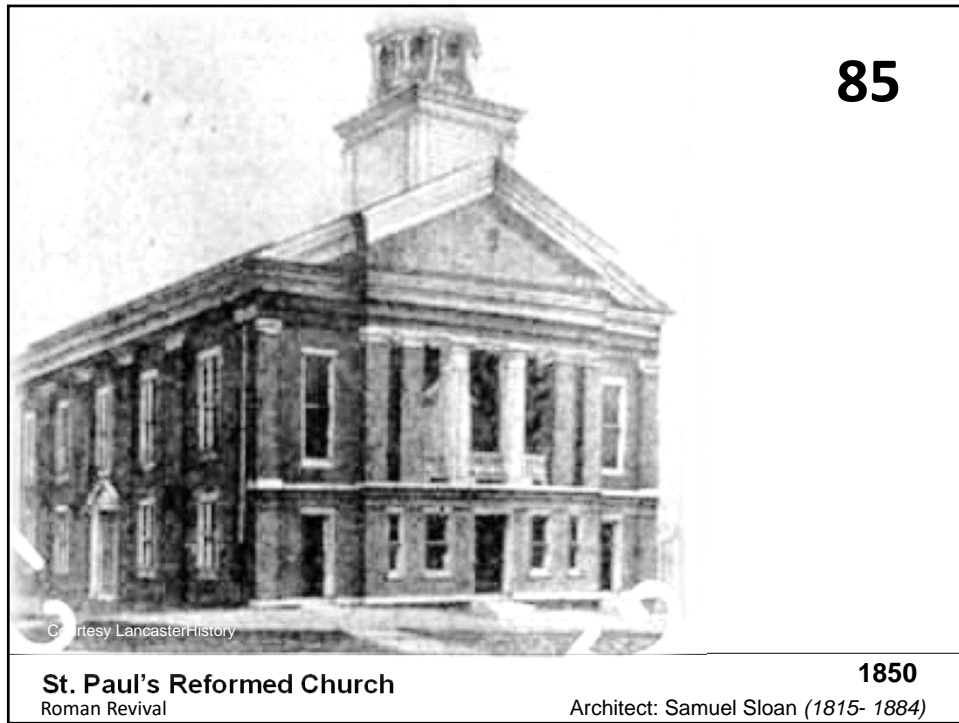
C. Emlen Urban (1863 – 1939)

Bolton &amp; Savage - Consultants

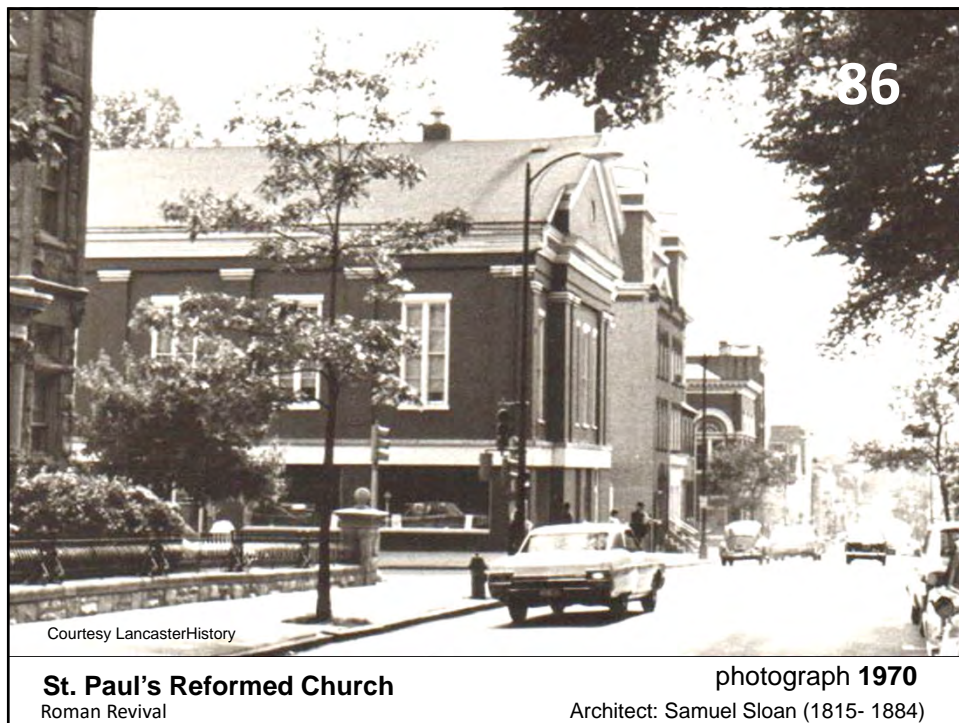
*Razed: c1981*

84

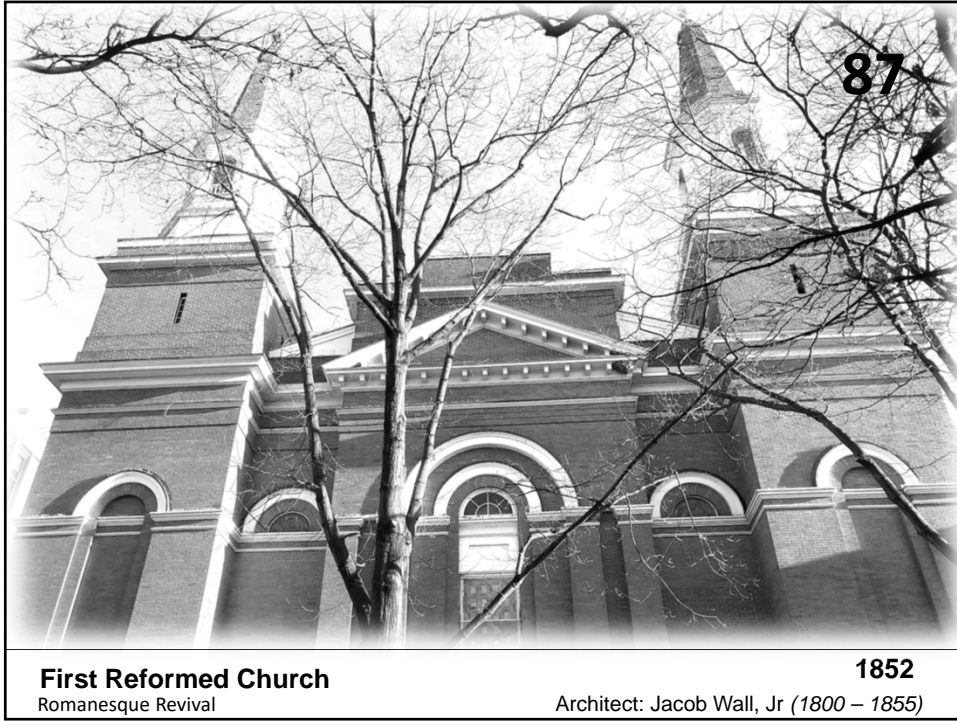




85



86



87



88





89



90



# 91

## Leinbach Department Store

Beaux Arts

**1899**

C Emlen Urban (1863-1939)

*Reclad: c1940*

91



# 92

## Leinbach Department Store

Beaux Arts

**1899**

C Emlen Urban (1863-1939)

*Reclad: c1940*

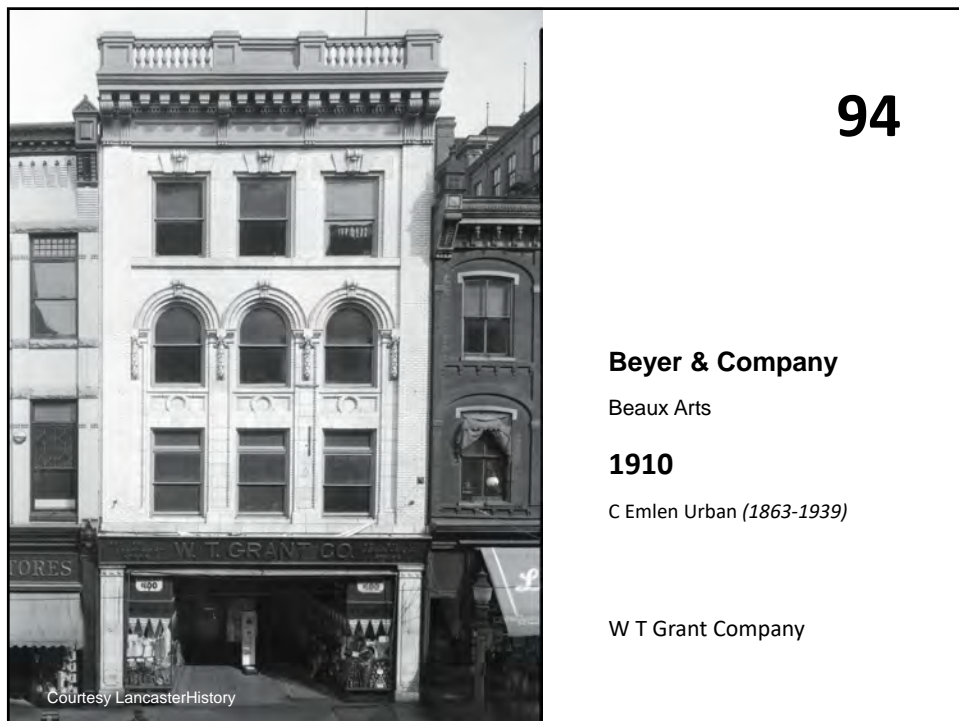
Courtesy LancasterHistory

92





93



94



95



96